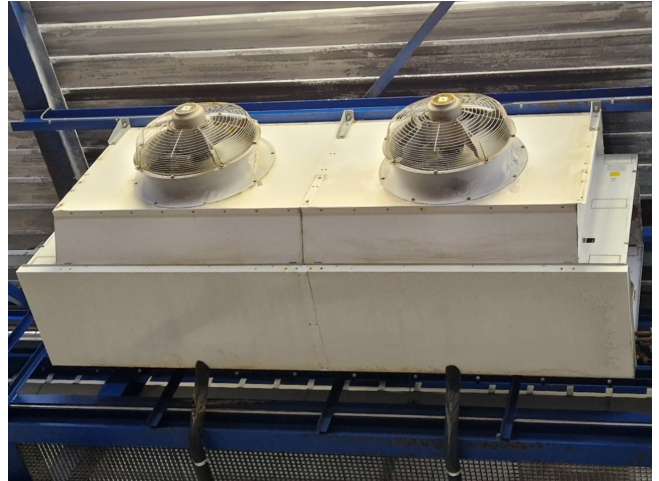


Helpman THOR 728-10/ZH1.5

Specifications

Производитель	Helpman
Тип	THOR 728-10/ZH1.5
кВт	66,7
Хладагент	Freon
К-во вентиляторов	2
Расстояние между ламелями, мм	10
Оттайка	Hot Gas
Поток воздуха м ³ /час	42.300
Размеры	4100x1400x1300 mm (LxWxH)
Volume	142,0 dm ³
вес	524 kg
Stock	4

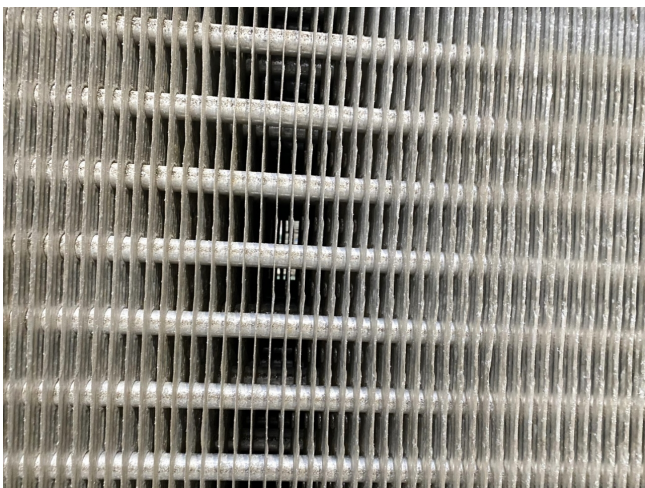
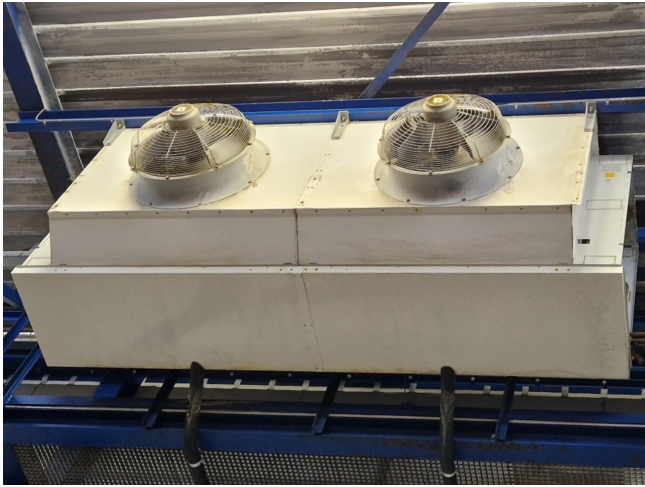


Description

Used Helpman THOR 728-10/ZH1.5

Used Helpman THOR 728-10/zh1.5 evaporator on Freon. Complete with 2 fans - 50 Hz - 2,2 kW - 1420 RPM - diameter 710 mm that have a total airflow of 42.300 m³/h.

*All components of this used evaporator will be tested on good working, leak free condition (electro engines), coils, bearings) Choosing HOSBV means buying with warranty. We perform a industrial cleaning and rust spots will be covered. Also, we can arrange your shipment.



HELPMAN Apparatenfabriek Helpman BV
Peizerweg 97
NL - 9727 AJ Groningen

Type	THOR 728-10/ZH1.5 G2-I2		
Serial nr.	510382/120752-14197-001		
Medium	R404A		
Min/max workingtemperature	-40/55	°C	
Design/testpressure	20/25	bar	
Volume	142.0	dm ³	
Weight (empty)	524	kg	
			2002

